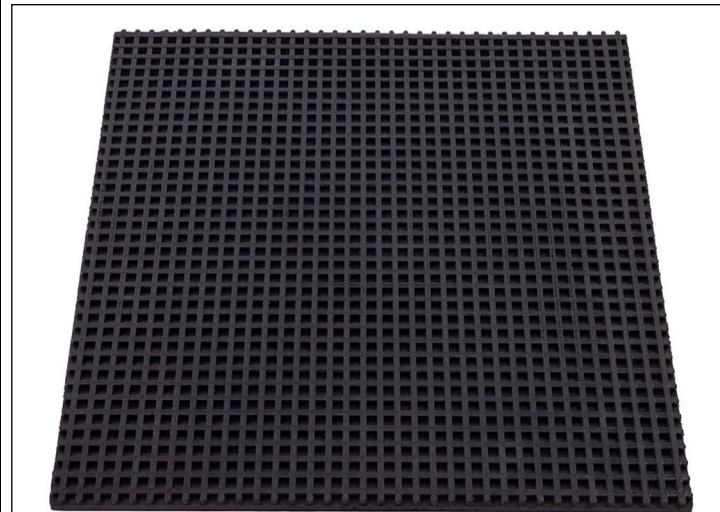
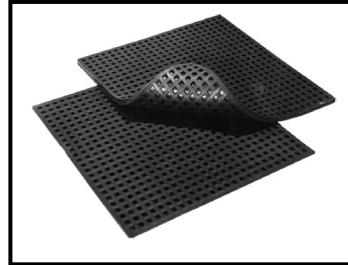
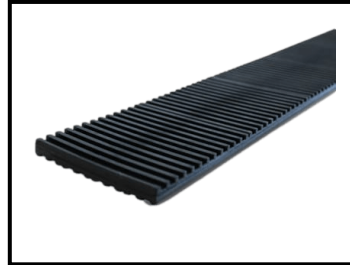
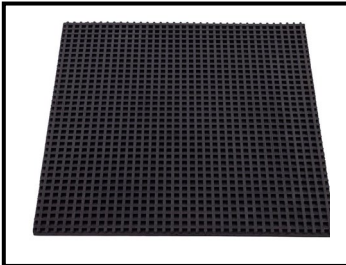


Technical Data Sheet

Isolator Waffle Pad

Natural Rubber Waffle Pad



Sheet 450x450x10mm



Strips 1000x100x10mm

Waffle Mat 450x450x8 and 1000x100 x10mm

Material:

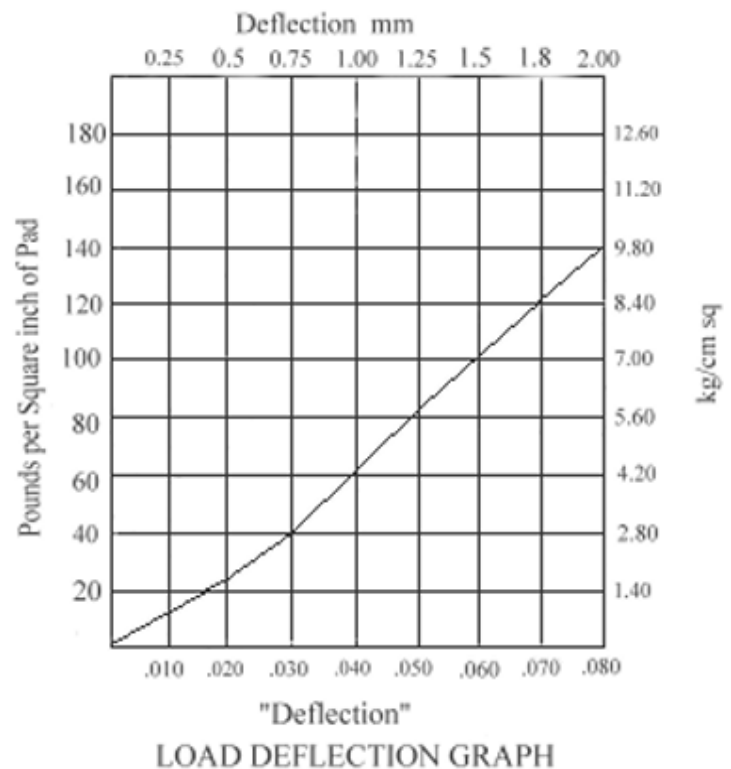
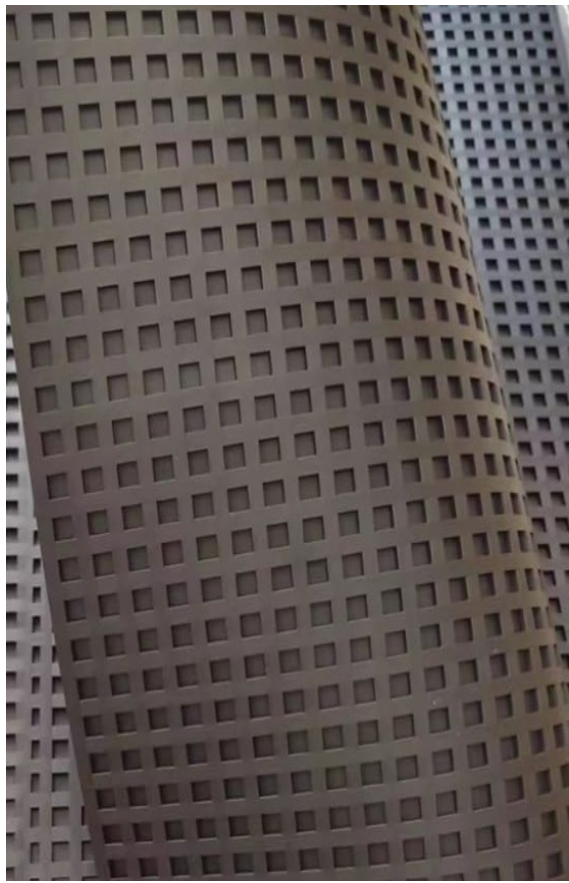
Natural Rubber Low-cost mat that effectively reduces mechanical noise, vibration, and shock in non-critical applications.

Waffle pad is a 10mm anti-vibration mat featuring a series of square cut outs in the 450x450 or slots in the 1m strips which increase the amount of material which can deform under load. This increases the overall deflection which increases the acoustic isolation properties of the load.

Nominal load for is 4.3kg per square cm.

Details

- Waffle Pad is the simplest and most inexpensive way to isolate vibration, shock and reduce noise level. The has two-sided waffle design that allows material expansion without loss of stability, providing maximum resilience and minimal creep.
- Waffle Pad is suitable for use in machine shops under lathes, milling machines, drill presses, grinders, and metal fabricating equipment. It is also recommended for HVAC, motors, generators and for utility use as shims and blocks.
- Waffle pads can be supplied in stacks, with each layer separated by steel plates. The amount of available deflection (and therefore acoustic isolation) increases in line with the height of rubber in the stack. The steel plates allow for load to be transferred evenly across the stack



Name: Waffle pad

Colour: Black

Test Temperature: 23 °C

Dimensions: 457 × 457 × 8 mm 1000x100x10mm

Relative Humidity : 35% Test Item

Actual Result Shore A Hardness Degrees °ShA 55 +/-5

Tensile Strength At Break (MPa) 5.0 +/-0.02

Elongation At Break Change (%) 268 +/-20 Density (g/mm³) 1.3

Static Loading Capacity (Kg/Sq.) 3.8

Deflection at Max load (%) 10 Impact

Loading Capacity (Sq. Cms) 4.3