

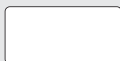
# FLAT CHANNEL DUCTING - Low Profile

## System Profiles

Low profile ducting is easily concealed when installed along the top of wall units. It can also be fitted in ceiling and wall cavities providing versatility whilst remaining unobtrusive. All system components are made from flame retardant material.

### 110mm x 54mm

(equivalent to 100mm Ø)



- Suitable for applications requiring low extraction rates (i.e. laundries and toilets)
- 5940mm<sup>2</sup> cross-section provides efficient ducting for short, straight runs connecting to a 100mm round spigot

### 204mm x 60mm

(equivalent to 125mm Ø)



- Suitable for ducting of range hoods with 100mm, 125mm or 150mm round exhaust spigots.
- 12240mm<sup>2</sup> cross section increases efficiency

### 220mm x 90mm

(equivalent to 150mm Ø)



- Suitable for high performance extraction or supply
- 19800mm<sup>2</sup> cross section makes it highly efficient and higher extraction rates are achieved.

### 300mm x 25mm



- For applications where space is very limited

## Duct (M)

(pack of 6)



Duct (mm)	Dimensions W x H x D (mm)	Flow Rate Resistance (Pa)								Order Code
		10 (l/s)	12 (l/s)	25 (l/s)	40 (l/s)	50 (l/s)	60 (l/s)	120 (l/s)	180 (l/s)	
110 x 54	110 x 54 x 1500	1.5	2.4	9.1	19.8	25.9	32	-	-	DCT0013
204 x 60	204 x 60 x 1500	<1	<1	1.5	4.5	5.9	78	-	-	DCT0519
220 x 90	220 x 90 x 1500	-	-	-	-	-	1.4	4.9	10.2	DCT1443
300 x 25	300 x 25 x 1500	-	-	-	-	-	4.5	16.1	56.3	DCT1460

## Connectors (F to F)



Duct (mm)	Dimensions W x H x D (mm)	Flow Rate Resistance (Pa)								Order Code
		10 (l/s)	12 (l/s)	25 (l/s)	40 (l/s)	50 (l/s)	60 (l/s)	120 (l/s)	180 (l/s)	
110 x 54	114 x 54 x 100	<1	<1	1.4	3.4	4.8	6.4	-	-	DCT0014
204 x 60	212 x 64 x 100	<1	<1	<1	<1	1.2	1.5	-	-	DCT0520
220 x 90	224 x 95 x 52	-	-	-	-	-	<1	<1	<1	DCT1442
300 x 25	-	-	-	-	-	-	-	-	-	DCT1459

## Horizontal T-Pieces (F to F)



Duct (mm)	Dimensions W x H x D (mm)	Flow Rate Resistance (Pa)								Order Code
		10 (l/s)	12 (l/s)	25 (l/s)	40 (l/s)	50 (l/s)	60 (l/s)	120 (l/s)	180 (l/s)	
110 x 54	143 x 60 x 174	(installation dependent)						-	-	DCT1479
204 x 60	245 x 65 x 279	(installation dependent)						-	-	DCT1114
220 x 90	280 x 95 x 250	-	-	-	-	-	(installation dependent)			DCT3126

# FLAT CHANNEL DUCTING - Low Profile

## Horizontal and Vertical Bends (F to F)



Duct (mm)	Dimensions W x H x D (mm)	Flow Rate Resistance (Pa)								Order Code
		10 (l/s)	12 (l/s)	25 (l/s)	40 (l/s)	50 (l/s)	60 (l/s)	120 (l/s)	180 (l/s)	
<b>Horizontal 90° Bends</b>										
110 x 54	152 x 60 x 152	2.6	9.9	38	93	124	162	-	-	DCT0125
204 x 60	260 x 65 x 260	1.4	1.7	8.4	18	25	34	-	-	DCT0524
220 x 90	250 x 95 x 250	-	-	-	-	-	9	36	80	DCT1448
300 x 25	-	-	-	-	-	-	-	-	-	DCT2097
<b>Horizontal 45° Bends</b>										
220 x 90	240 x 95 x 200	-	-	-	-	-	5	20	46	DCT2701
300 x 25	-	-	-	-	-	-	-	-	-	DCT2098
<b>Vertical 90° Bends</b>										
110 x 54	115 x 95 x 95	3.3	15.5	36	138	190	253	-	-	DCT0126
204 x 60	210 x 115 x 115	1.1	2.5	5.2	24	33.6	45	-	-	DCT0525
220 x 90	224 x 117 x 120	-	-	-	-	-	7	28	66	DCT1447
300 x 25	-	-	-	-	-	-	-	-	-	DCT2099
<b>Vertical 45° Bends</b>										
220 x 90	225 x 110 x 115	-	-	-	-	-	6	27	65	DCT2700
300 x 25	-	-	-	-	-	-	-	-	-	DCT1455

## Round to Rectangular Adapters



Duct (mm)	Dimensions W x H x D (mm)	Flow Rate Resistance (Pa)								Order Code
		10 (l/s)	12 (l/s)	25 (l/s)	40 (l/s)	50 (l/s)	60 (l/s)	120 (l/s)	180 (l/s)	
<b>Short Adapters</b>										
Ø 100 (M) : 110 x 54 (F)	110 x 60 x 105	3	4.3	20	43	62	88	-	-	DCT0127
Ø 100 (M) : 110 x 54 (M)	110 x 60 x 105	3	4.3	20	43	62	88	-	-	DCT0131
<b>Long Adapters</b>										
Ø 100 (M) : 110 x 54 (F)	115 x 100 x 180	2.9	4.2	19.8	42	60	86	-	-	DCT1482
Ø 125 (F) : 204 x 60 (F)	213 x 140 x 213	<1	<1	2.8	6.7	9	11.5	-	-	DCT0526
Ø 150 (F) : 220 x 90 (F)	225 x 160 x 203	-	-	-	-	-	3.7	14.1	30.7	DCT1446
Ø 100 (F) : 300 x 25 (F)	308 x 29	-	-	-	-	-	6.1	23.7	91.7	DCT1461

## Reducers



Description	Order Code
110 x 54 : 204 x 60	DCT0136
204 x 60 : 220 x 90	DCT1452
300 x 25 : 204 x 60	DCT1456

Designed to fit 204 x 60mm flat channel or airbrick

# FLAT CHANNEL DUCTING - Low Profile

## Elbow Bends

(with rotating offset spigot)



Duct (mm)	Dimensions W x H x D (mm)	Flow Rate Resistance (Pa)								Order Code
		10 (l/s)	12 (l/s)	25 (l/s)	40 (l/s)	50 (l/s)	60 (l/s)	120 (l/s)	180 (l/s)	
<b>100mm</b>										
Ø 100 (M) : 110 x 54 (F)	115 x 90 x 140	5.6	8	33	74.5	101	137	-	-	DCT0124
Ø 100 (F) : 110 x 54 (F)	115 x 90 x 140	5.6	8	33	74.5	101	137	-	-	DCT0015
Ø 100 (M) : 204 x 60 (F)	215 x 80 x 195	2.9	7.1	28	68.1	92.2	118	-	-	DCT0521
Ø 100 (M) : 220 x 90 (F)	226 x 118 x 240	-	-	-	-	-	5.3	20.4	44.8	DCT1444
Ø 100 (M) : 300 x 25 (F)	-	-	-	-	-	-	-	-	-	DCT2095
<b>125mm</b>										
Ø 125 (M) : 204 x 60 (F)	215 x 80 x 195	3.1	5.9	25	62.2	86	111	-	-	DCT0522
Ø 125 (M) : 220 x 90 (F)	226 x 118 x 240	-	-	-	-	-	3.6	14.9	34.4	DCT1440
Ø 125 (M) : 300 x 25 (F)	-	-	-	-	-	-	-	-	-	DCT2096
<b>150mm</b>										
Ø 150 (M) : 204 x 60 (F)	215 x 80 x 195	2.8	4.9	21	41	53	67	-	-	DCT0523
Ø 150 (M) : 220 x 90 (F)	226 x 118 x 240	-	-	-	-	-	9	34	75	DCT1441

## Adjustable Bends - Horizontal



Duct (mm)	Order Code
204 x 60	DCT1480

## Airbrick Inserts



Description	Duct (mm)	Dimensions W x H x D (mm)	Flow Rate Resistance (Pa)								Order Code
			10 (l/s)	12 (l/s)	25 (l/s)	40 (l/s)	50 (l/s)	60 (l/s)	120 (l/s)	180 (l/s)	
Horizontal	204 x 60	210 x 65 x 85	3.2	7.8	20.9	96	128	176	-	-	DCT0137
Vertical	204 x 60	65 x 210 x 85	3.2	7.8	20.9	96	128	176	-	-	DCT1414

Horizontal: 110 x 54 duct connection requires reducer DCT0136  
 204 x 60 duct connection requires duct connector DCT0520  
 Vertical: Comes with duct connector DCT0520

## Double Airbricks



Duct (mm)	Dimensions W x H x D (mm)	Flow Rate Resistance (Pa)			Order Code
		60 (l/s)	120 (l/s)	180 (l/s)	
220 x 90	245 x 145 x 80	37.4	74.8	112.2	DCT1450

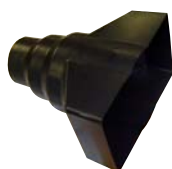
# FLAT CHANNEL DUCTING - Low Profile

## Double Airbrick Adapters



Duct (mm)	Dimensions W x H x D (mm)	Flow Rate Resistance (Pa)			Order Code
		60 (l/s)	120 (l/s)	180 (l/s)	
220 x 90	226 x 132 x 52	10.4	37	81.5	DCT1451

## Double Airbrick Adapter to Round Duct



Duct (mm)	Dimensions W x H x D (mm)	Order Code
100/125/150	235 x 140	DCT1453

## Wall/Ceiling Plates



Size (mm)	Dimensions W x H (mm)	Order Code
<b>Round</b>		
Ø 104	155 x 155	DCT0148
Ø 130	170 x 170	DCT0149
Ø 160	200 x 200	DCT0150
<b>Rectangular</b>		
	154 x 154	DCT0016
	264 x 119	DCT0528

## External Tube Grilles



Dimensions	Order Code
Ø 100	DCT2206

Designed to fit directly into round solid tube, for systems ducted straight through an external wall.

## External Louvre Grilles



Dimensions	Order Code
Ø 100	DCT2200
Ø 125	DCT2201
Ø 150	DCT2202

## Duct Clips



Duct (mm)	Clips Required	Order Code
<b>Horizontal</b>		
110 x 54	1	DCT0134
204 x 60	1	DCT0527
<b>Vertical</b>		
220 x 90	2	DCT1445
300 x 25	2	DCT1458