

# Single Room VL100 Wall Mount

## FRESH AIR ENERGY RECOVERY SYSTEM



VL-100EU5-E

29 l/s of air

The VL100EU5-E Wall-Mounted Lossnay unit offers an efficient balanced pressure ventilation solution for areas up to 88m<sup>2</sup>\*. The Lossnay system recovers energy from the outgoing air to pre-warm (or pre-cool) the incoming fresh air, effectively minimising moisture build-up and helping to maintain a warmer, drier, and healthier indoor environment throughout the year. The ductless design makes it ideal for spaces without roof access for heat exchangers and ductwork.



### Key Features



#### Low Noise Operation

Sound levels start from 25dB on low fan speed.



#### Easy to Clean Filter

Simply vacuum the filters, then wash them by hand in lukewarm water. Let them dry completely before putting them back.



#### Easy to Install

By drilling two 85-90mm diameter installation holes.



#### Flexible Application

Ideal for residential or small commercial applications where there is no roof space.

### Key Lossnay Ventilation Benefits

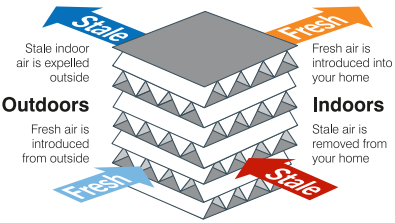
- ✓ Brings fresh filtered air in
- ✓ Removes stale air
- ✓ Reduces moisture build-up
- ✓ Improves air quality for better health and wellbeing
- ✓ Efficient energy recovery that pre-warms or pre-cools incoming air

\*m<sup>2</sup> room / area calculated at 0.5 air changes with ceiling height of 2.4m.

# Balanced Pressure Energy Recovery Ventilation

The balanced pressure ventilation system captures and filters fresh outdoor air (as opposed to stale attic air) to replace indoor stale air for an all-round healthier, drier and warmer room. This system is ideal for modern homes that are of more airtight construction.

## The Lossnay Core

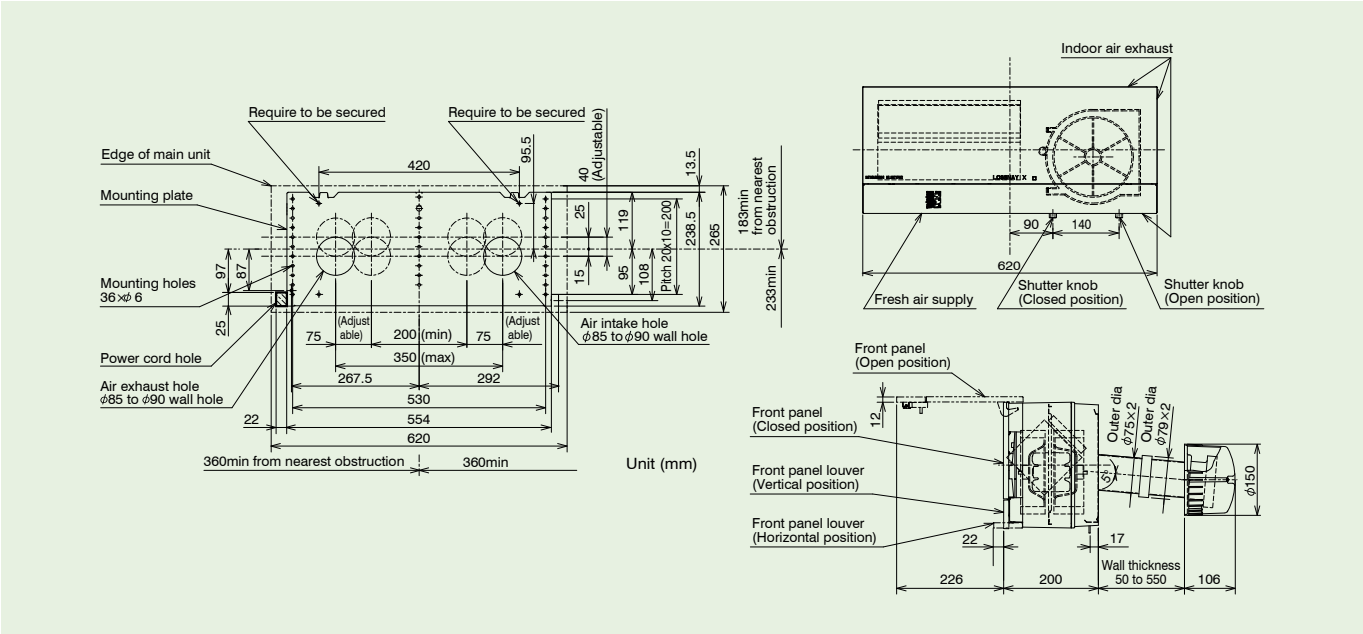


The Lossnay Core recovers energy from the extracted stale air, to pre-warm or pre-cool the incoming air. As a result, an existing heating appliance in the room does not have to work as hard to reach desired temperatures, maximising energy efficiency and reducing your energy bill.



## Specifications

Model	Type	Supply Voltage (V)	Power Line Frequency (Hz)	Fan Speed	Air Volume (m3/h)	Air Volume (l/s)	Power Consumption (W)	Temp. Exchange Efficiency (%)	Noise (dB)	Weight (kg)
VL-100EU5-E	Through-wall Installation	230	50	HI	105	29.1	31	73	37	7.5
				LO	60	16.6	15	80	25	



**Please note:** When deciding on the best place to position the Lossnay Ventilation System, care needs to be taken to not have incoming air intake near or close to a wood burner flue.

For more information please visit our website  
or call our Customer Service Team.  
[www.mitsubishi-electric.co.nz](http://www.mitsubishi-electric.co.nz) | 0800 784 382

PUBLISHED AUG 2025

PLEASE LOOK AFTER THE ENVIRONMENT AND RECYCLE



Black Diamond Technologies Limited



Exclusive New Zealand Partner Since 1981

